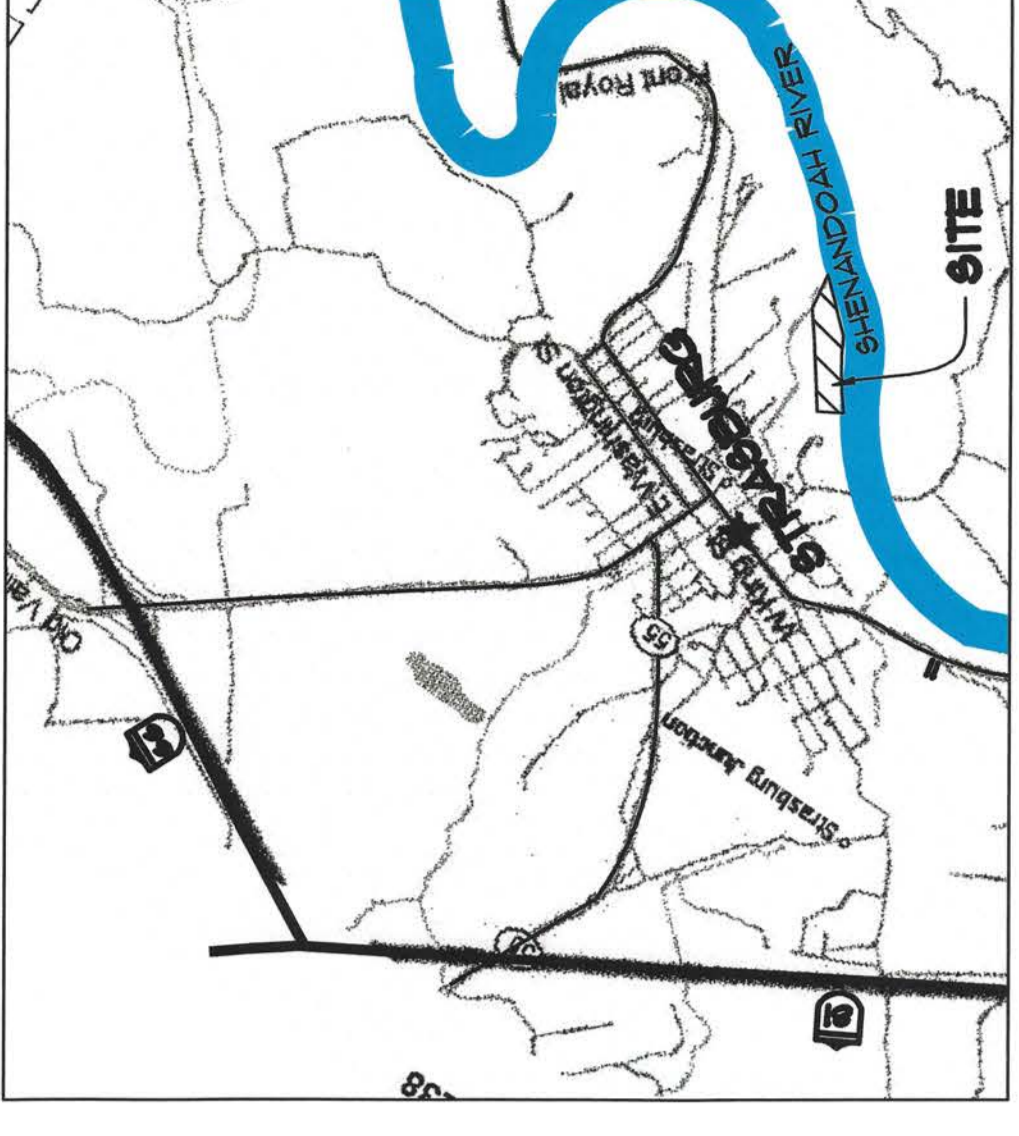


# STRASBURG

## PARK AND TRAIL PLAN

ELIZABETH HUPP RICHARD PROPERTY  
STRASBURG, VA



VICINITY MAP  
NTS.



### NOTES:

1. Boundary, Sewer, Easements, and Floodplain information as per Plat by Bouman Consulting Group dated March 8, 2001. Floodplain line shown hereon was determined by approximation using Greenway Engineering Site Plan for Strasburg High School Student Parking Lot, dated March 1, 2002.
2. Topography as digitized from information provided by the Town of Strasburg, date unknown.
3. Vegetation and Pond location digitized from USGS Digital Ortho Quarter Quad, date unknown.

# DRAFT MASTER PLAN

SEPTEMBER 23, 2002

### SHEET INDEX

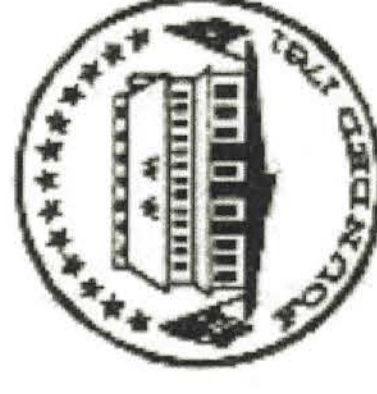
1. COVER SHEET
2. EXISTING CONDITIONS
3. MASTER PLAN
4. TRAIL ALIGNMENT PLAN
5. PRIMARY MULTI-USE TRAIL PLAN AND DETAILS
6. RIVERWALK TRAIL PLAN AND DETAILS

Prepared by:



ENGINEERS • SURVEYORS • LAND PLANNERS • LANDSCAPE ARCHITECTS  
**William H. Gordon Associates, Inc.**  
4501 Daly Drive • Chantilly, Virginia 20151  
(703) 263-1900 • MEMO (703) 803-9506 • FAX (703) 263-0766

FILE PLANNING.1927.4





1 - LOOKING ALONG RIDGE AT VIEW FROM PRIMARY TRAIL



2 - LOOKING AT MOUNTAIN VIEW (LEVEL TERRAIN MAKES THIS AN IDEAL AREA FOR ATHLETIC FIELDS)



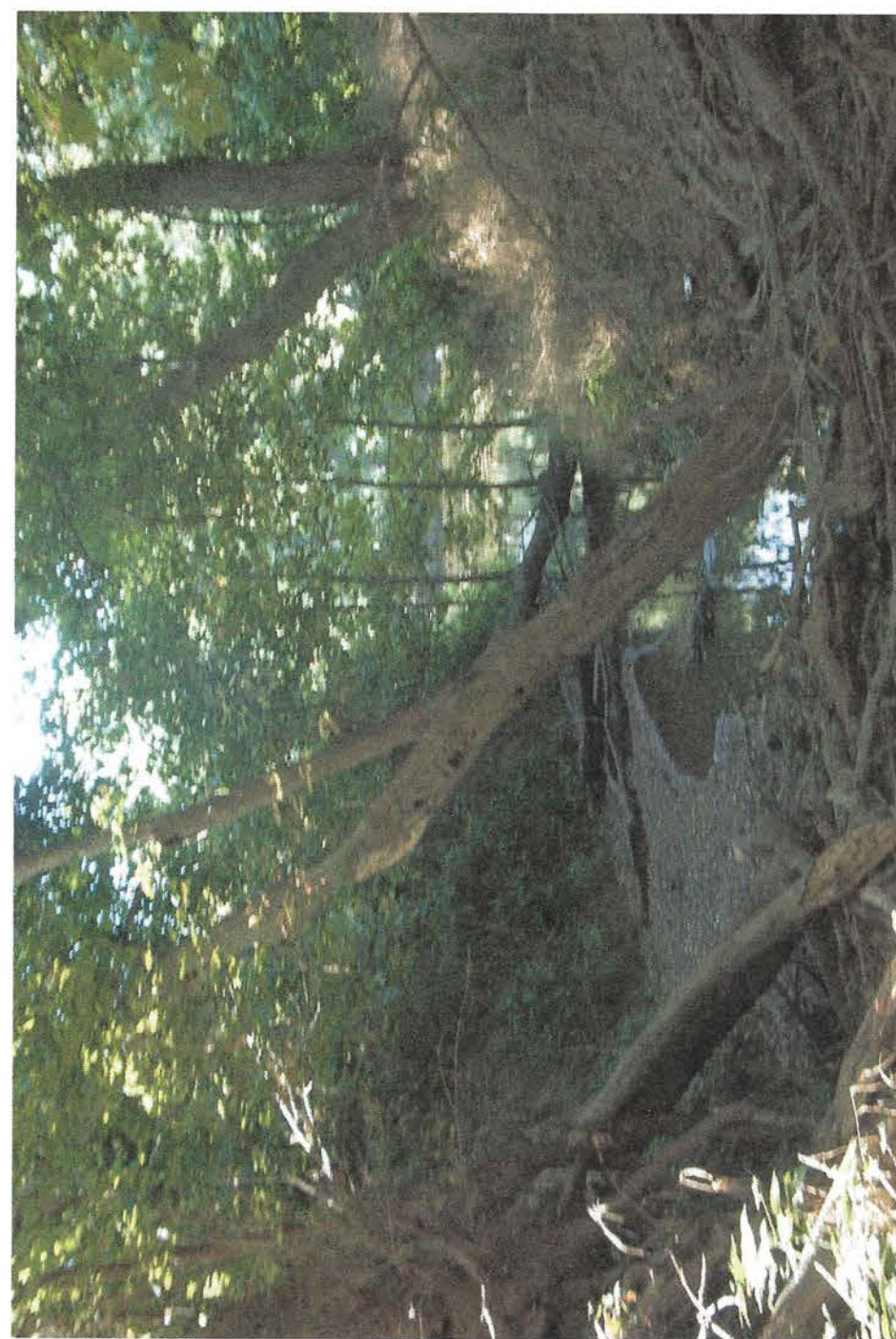
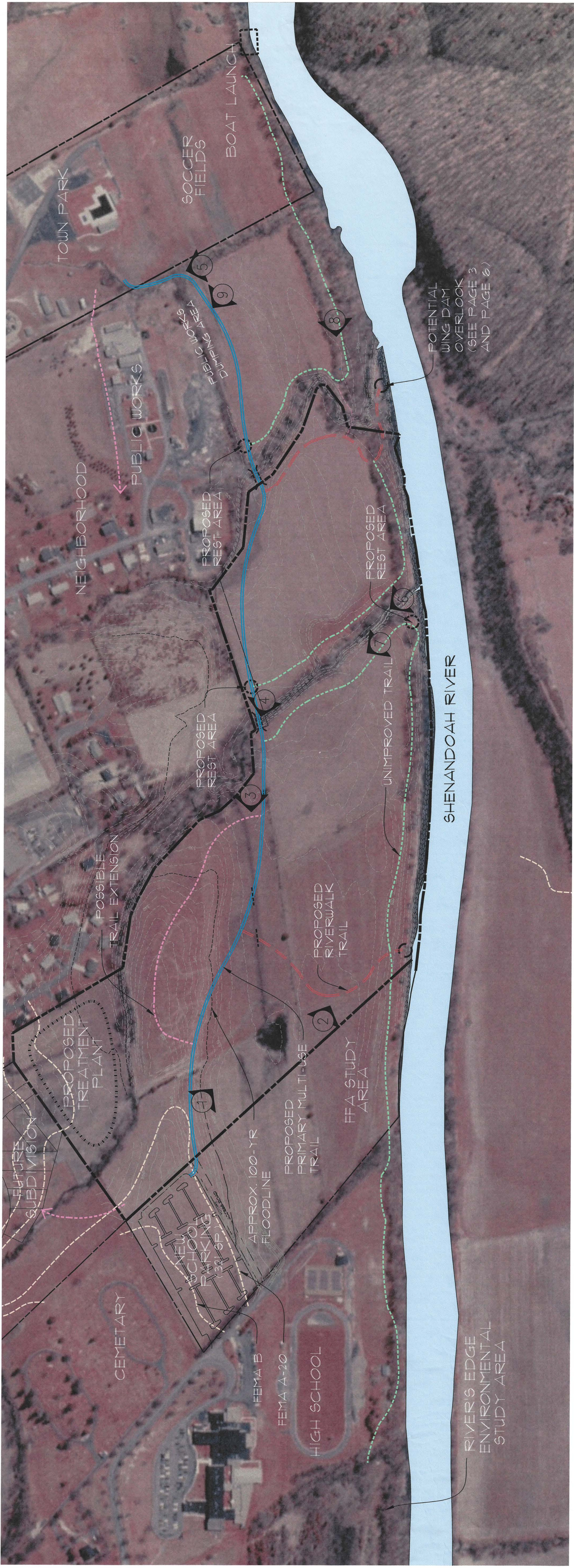
3- LOOKING AT FENCE ROW SEPARATING TRAIL FROM PROPOSED ATHLETIC FIELDS



4- LOOKING AT CREEK CROSSING ALONG ROUTE OF PROPOSED PRIMARY MULTI-USE TRAIL



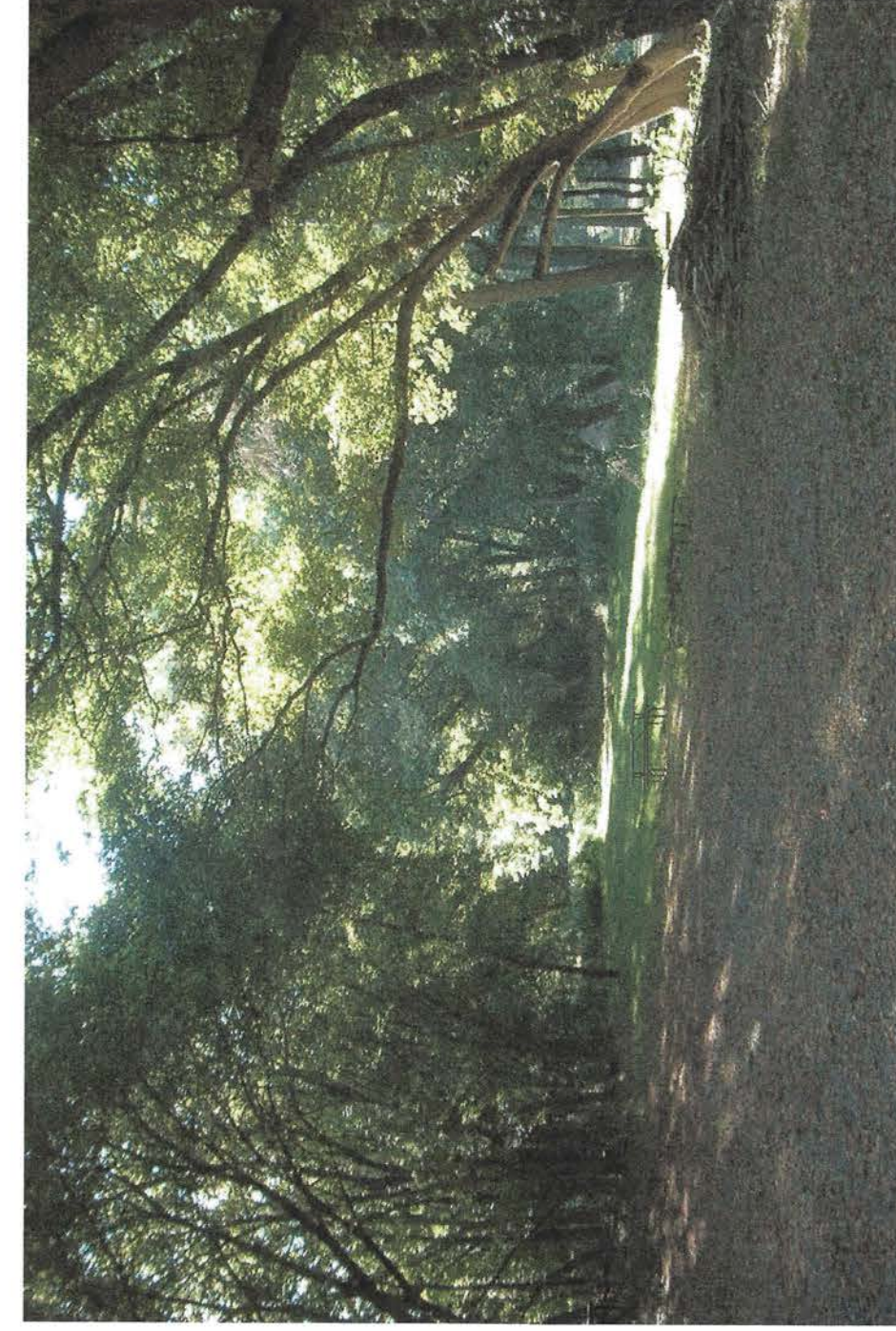
5- LOOKING AT PROPOSED TRAIL ROUTE LEADING TO TOWN PARK



6 - LOOKING AT CREEK NEAR RIVER (PERMANENT FOOTBRIDGE REQUIRED FOR ANY TRAIL CROSSING)



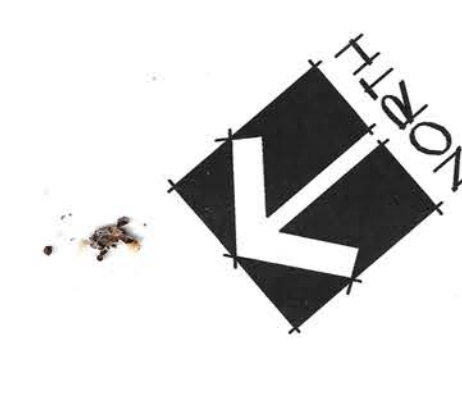
7 - LOOKING AT TYPICAL UNIMPROVED TRAIL ROUTE EXTENDING FROM PRIMARY TRAIL



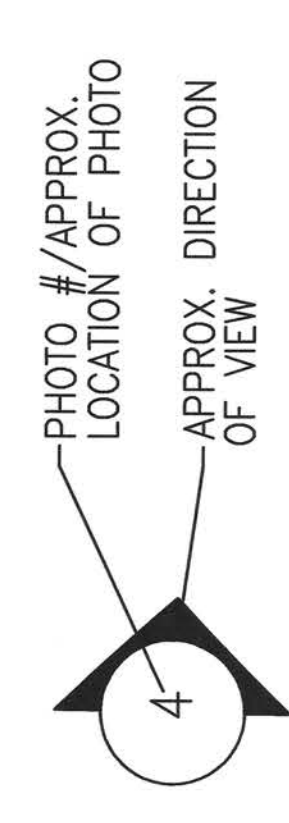
8 - LOOKING AT TREE ALLEE TO BE PRESERVED



9 - LOOKING AT DUMPING AREA TO BE SCREENED



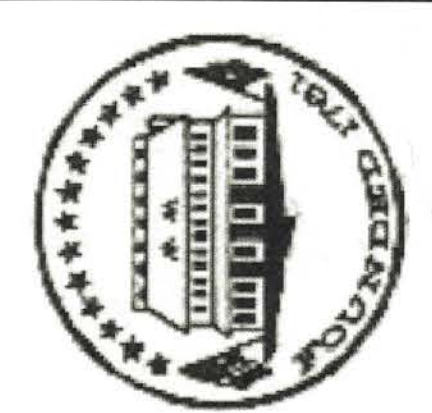
LEGEND



Date: September 23, 2002  
 Scale: 1" = 150'  
 WJGA # 1927-0101  
 PAGE 2 OF 6

**WJGA**  
 ENGINEERS - SURVEYORS - LAND PLANNERS - LANDSCAPE ARCHITECTS  
 William H. Gordon Associates, Inc.  
 11711 W. 11th Street, Suite 100  
 Overland Park, KS 66213  
 (785) 851-1000 • FAX (785) 851-2558 • WWW.WJGA.COM

EXISTING CONDITIONS  
 TOWN OF STRASBURG  
 RECREATION MASTER PLAN  
 ELIZABETH HUFF RICHARD PROPERTY

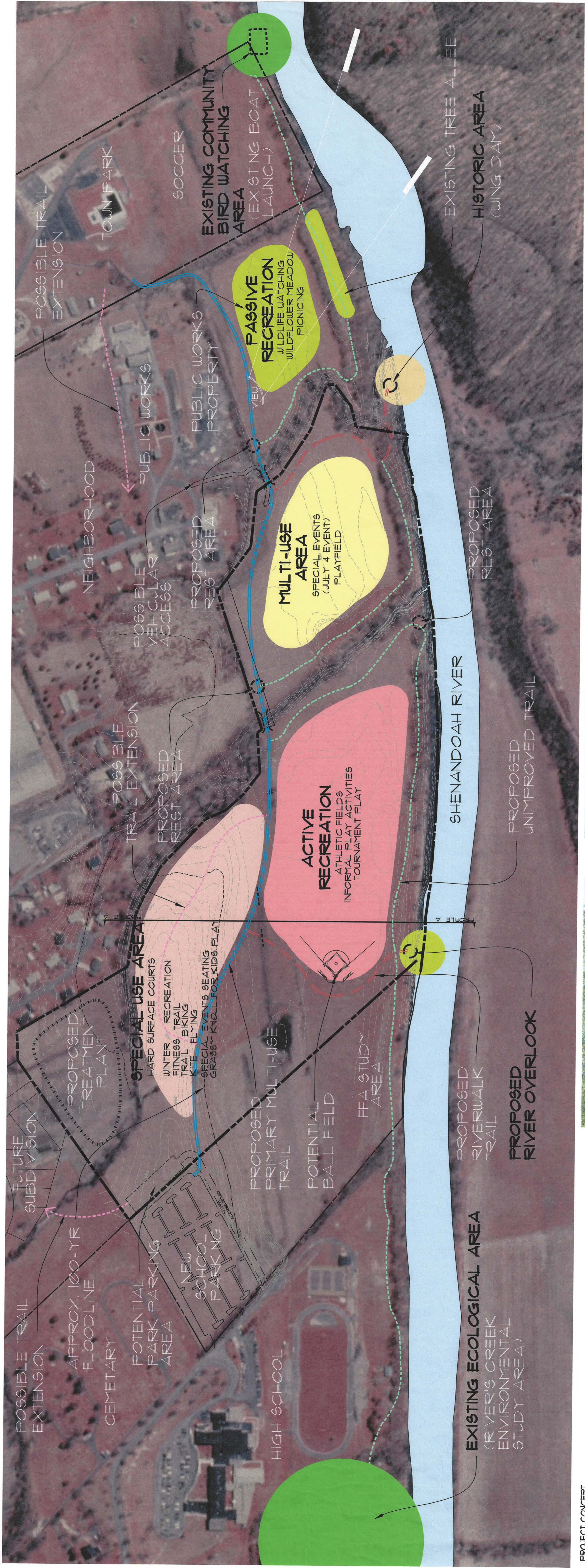
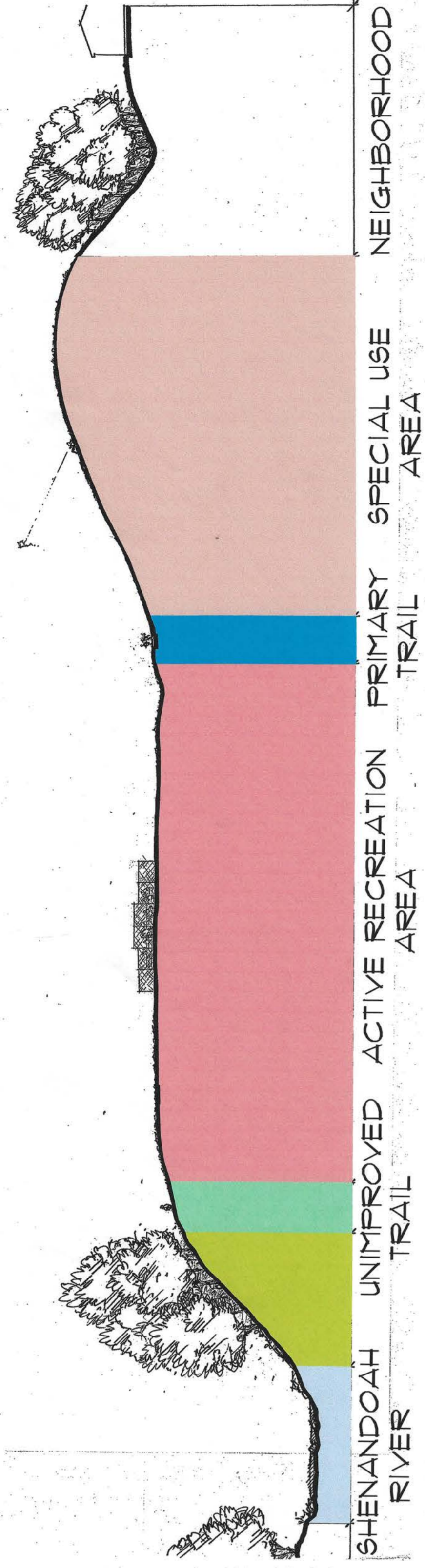


# LEGEND/SITE DATA:

|                    |                                     |
|--------------------|-------------------------------------|
| ACTIVE RECREATION  | 10.4 AC. +/-                        |
| PASSIVE RECREATION | 4 AC. +/- (AREAS DESIGNATED ON MAP) |
| MULTI-USE AREA     | 5.3 AC. +/-                         |
| ECOLOGICAL AREA    | 8 AC. +/-                           |
| SPECIAL USE AREA   | 6.8 AC. +/-                         |
| HISTORIC AREA      | N/A                                 |



**A** PARK PROFILE  
N.T.S. (5 TO 1 VERTICAL EXAGGERATION)

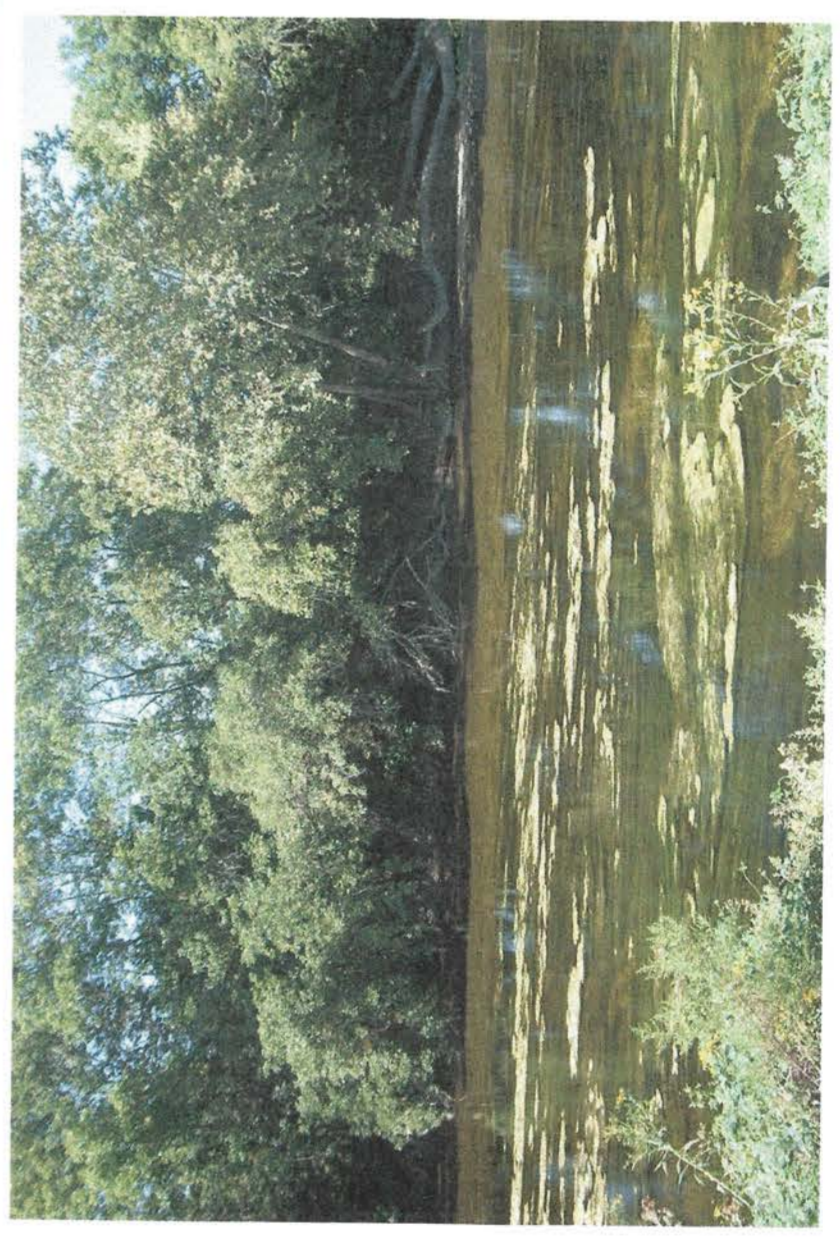


### PROJECT CONCEPT

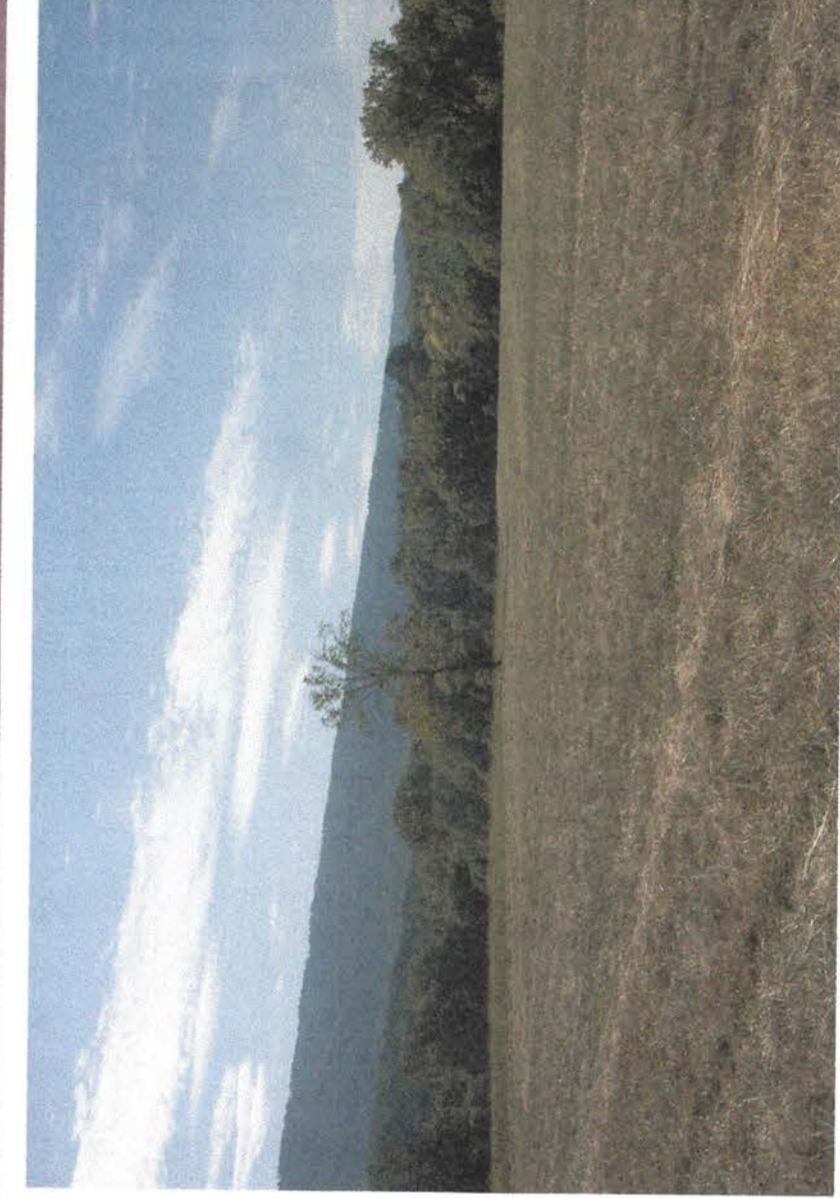
THE PROPOSED PARK IS SITUATED ON APPROXIMATELY 50 ACRES OF GENTLE TO ROLLING TOPOGRAPHY. THE EXISTING VEGETATION LARGELY CONSISTS OF OPEN FIELDS WITH MATURE WOODLANDS THAT ARE LOCATED ALONG THE RIVER. THE SHENANDOAH RIVER, ONE OF THE MOST IMPORTANT FEATURES OF THE PARK MASTER PLAN, IS A KEY ELEMENT OF THE PROJECT. THE TRAIL IS DESIGNED TO PROVIDE A LINK BETWEEN THE EXISTING TOWN PARK SURROUNDING NEIGHBORHOODS AND THE NEW TRAIL. THE TRAIL ENHANCES YEAR-ROUND USE BY THE COMMUNITY. THE MASTER PLAN RECOGNIZES AND CELEBRATES OPPORTUNITIES TO THE TOWN'S RESIDENTS.

ONE ELEMENT OF THE TRAIL SYSTEM INCLUDES A RIVERWALK CONNECTION THAT WILL LINK THE SHENANDOAH TO THE MULTI-USE TRAIL GIVING THE RESIDENTS AN OPPORTUNITY TO ENJOY ONE MILE OF RIVER TO THE RIVER. PLANNED ACTIVITY NODES ALONG THE RIVERWALK TRAIL INCLUDE FISHING, BIRD WATCHING, BOATING, AND CULTURAL EDUCATIONAL VIEWING AREAS. THE PLAN IDENTIFIES AN HISTORIC AREA DESIGNED TO VIEW THE REMNANTS OF A LING DAM USED IN THE 1800s FOR NAVIGATION OF GUMMADALOU BOATS (SEE SHEET 6). ADVENTURERS CAN EXPLORE THE BANKS ON A SUBTLE UNIMPROVED TRAIL THAT EXTENDS FROM THE BOAT LAUNCH TO THE RIVER'S CREEK ENVIRONMENTAL STUDY AREA.

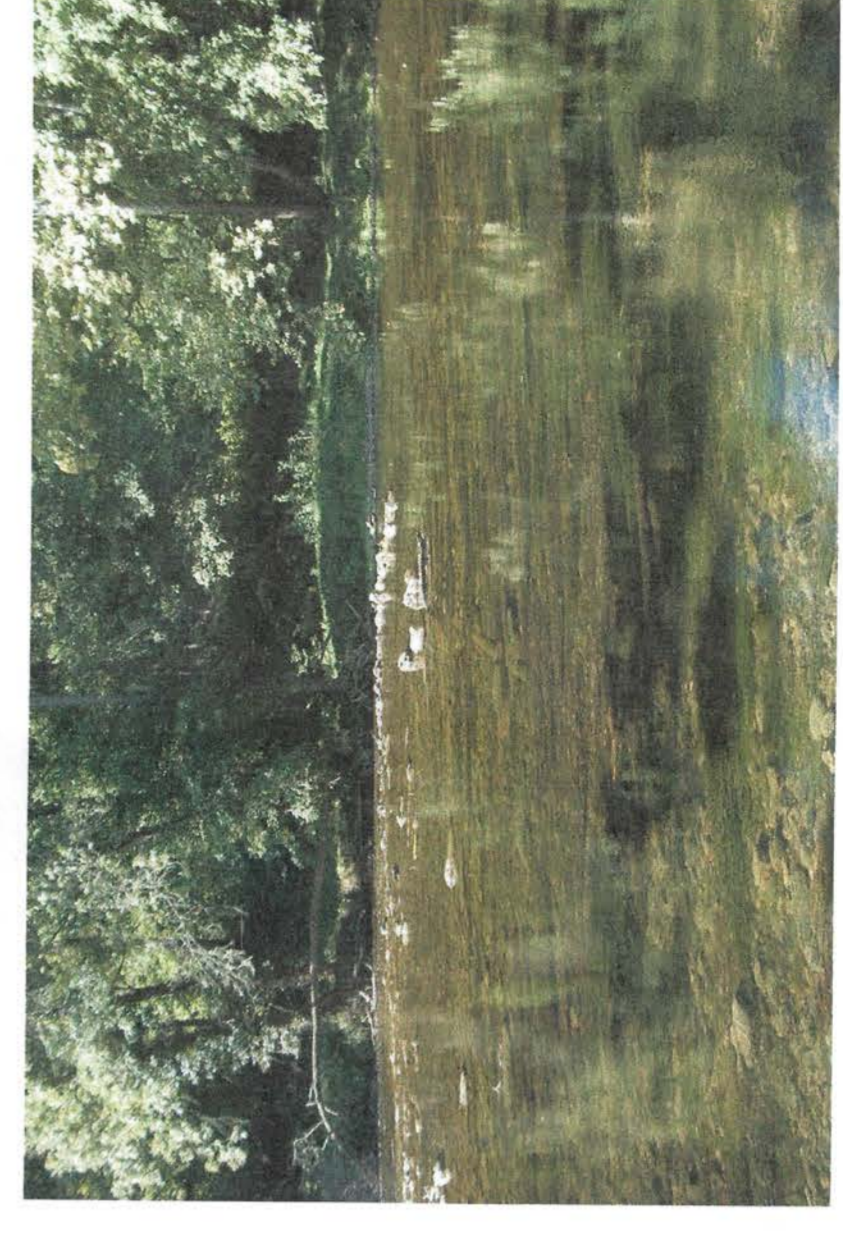
THE NATURAL FEATURES OF THE SITE AND THE PROPOSED TRAIL SYSTEM BEGAN TO SHAPE FUTURE DEVELOPMENT ENVIRONMENTS THAT WILL ULTIMATELY BE USED TO SUPPORT MANY OTHER PARK ACTIVITIES. THE GOAL OF THE MASTER PLAN IS TO IDENTIFY POSSIBLE COMPATIBLE USES AND THEIR APPROPRIATE AREAS WITHIN THE PARK. THE COMMUNITY WILL NEED TO DECIDE AND PRIORITIZE THEIR RECREATIONAL NEEDS THAT WILL BEST MEET THE SHORT TERM OR LONG TERM NEEDS OF A GROWING COMMUNITY.



POTENTIAL RIVER OVERLOOK



ACTIVE RECREATION AREA



LOCATION OF POSSIBLE WING DAM



EXISTING BOAT LAUNCH

Date: September 23, 2002

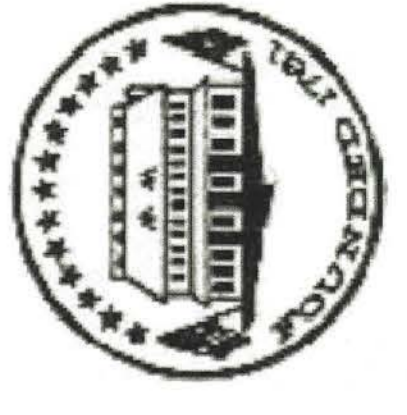
Scale: 1" = 150'

UHG# 1921-001

PAGE 3 OF 6

**EG&A**  
ENGINEERS, SURVEYORS, LAND PLANNERS, LANDSCAPE ARCHITECTS  
William H. Gordon Associates, Inc.  
4501 50th Drive, Charlottesville, Virginia 22911  
(703) 261-1000 • 800 (703) 885-888 • Fax (703) 282-0986

# MASTER PLAN TOWN OF STRASBURG RECREATION MASTER PLAN ELIZABETH HUPP RICHARD PROPERTY



# SITE DATA:

**PRIMARY TRAIL - MULTIPURPOSE**  
 LENGTH: 3,800' (+/-)  
 WIDTH: 8'-0" ASPHALT SURFACE  
 2'-0" PREPARED SHOULDER  
 12'-0" TOTAL  
 GRADE: MAX: 3%  
 AVG: 15%

EST. TRAVEL TIME:  
 WALK (2 MPH): 11 MIN.  
 JOG (4 MPH): 6 MIN.  
 BIKE (8 MPH): 2  
 CREEK CROSSINGS: 2

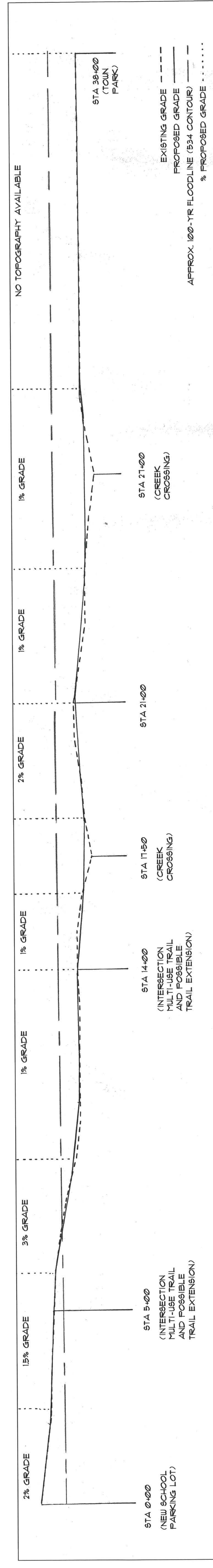
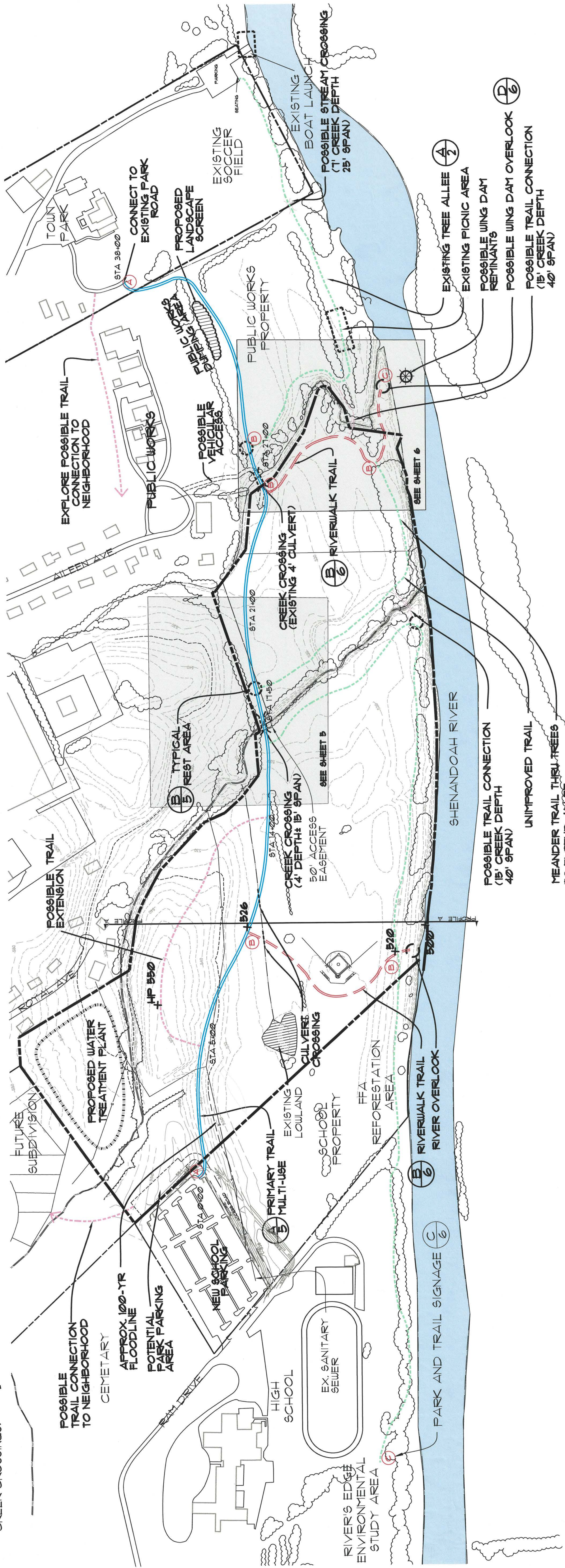
**SECONDARY TRAIL - RIVERWALK**  
 LENGTH: 1,600' (+/-)  
 WIDTH: 6'-0" ASPHALT SURFACE  
 2'-0" UNIMPROVED SHOULDER  
 10'-0" TOTAL  
 GRADE: MAX: 10%  
 AVG: 3%

STREAM CROSSINGS: 1

**UNIMPROVED TRAIL FAIR-WEATHER USE**  
 LENGTH: 5,000' (+/-)  
 WIDTH: 4'-0" (+/-)  
 CREEK CROSSINGS: 2  
 (POSSIBLE)

## LEGEND:

- PRIMARY MULTIPURPOSE TRAIL
- SECONDARY TRAIL
- UNIMPROVED TRAIL
- POSSIBLE TRAIL EXTENSION
- POSSIBLE TRAIL CROSSING
- CREEK CROSSING
- PROPOSED RESTING AREA
- PROPOSED SCENIC FEATURE
- EXISTING RECREATIONAL FEATURE
- POSSIBLE HISTORIC LANDMARK
- PARK AND TRAIL SIGNAGE



### PRIMARY MULTIPURPOSE TRAIL PROFILE

N.T.S. (5 TO 1 VERTICAL EXAGGERATION)

Date: September 23, 2002  
 Scale: 1" = 150'  
 WHGA # 1521-001  
 PAGE 4 OF 6



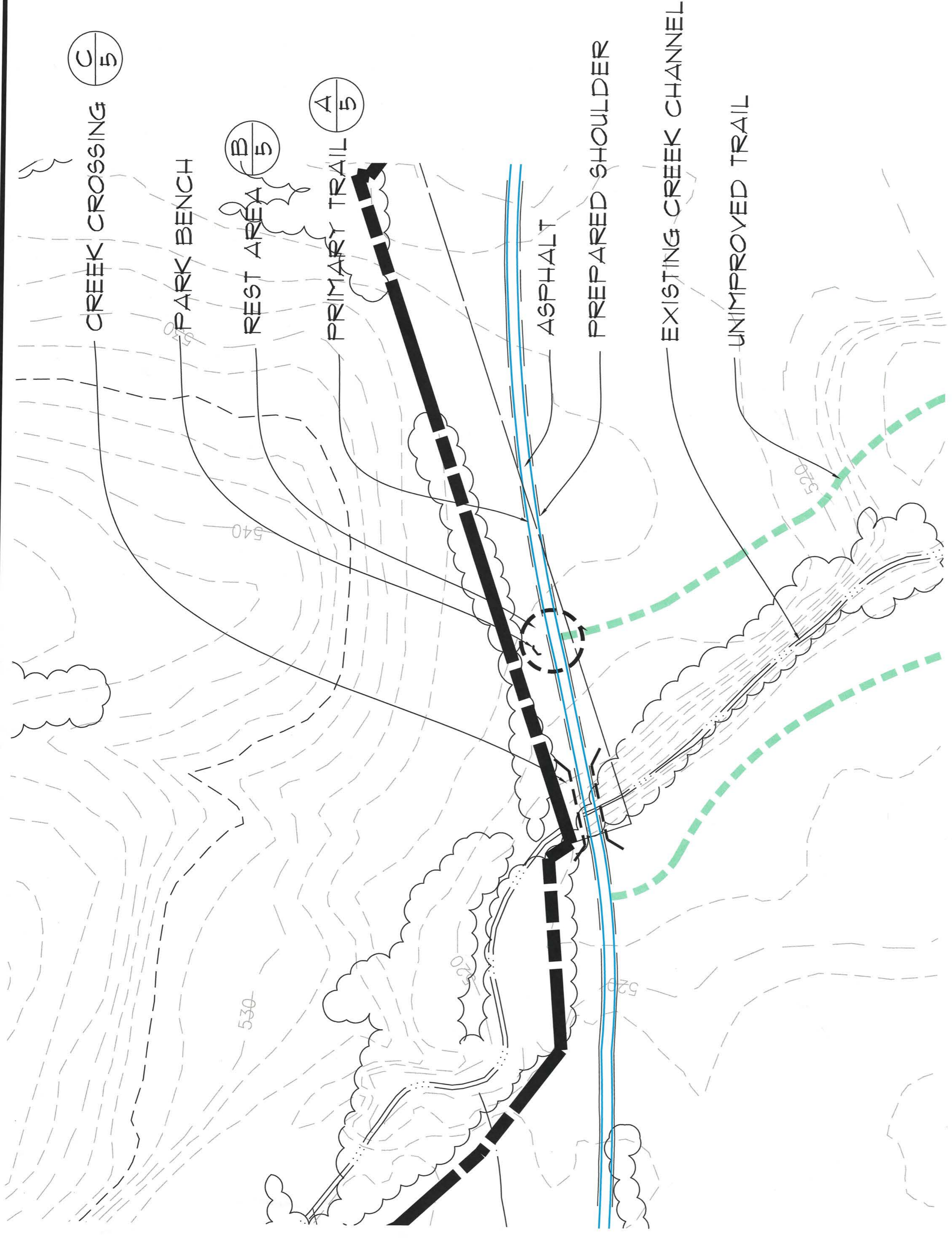
# TOWN OF STRASBURG

## TRAIL ALIGNMENT PLAN

### RECREATION MASTER PLAN

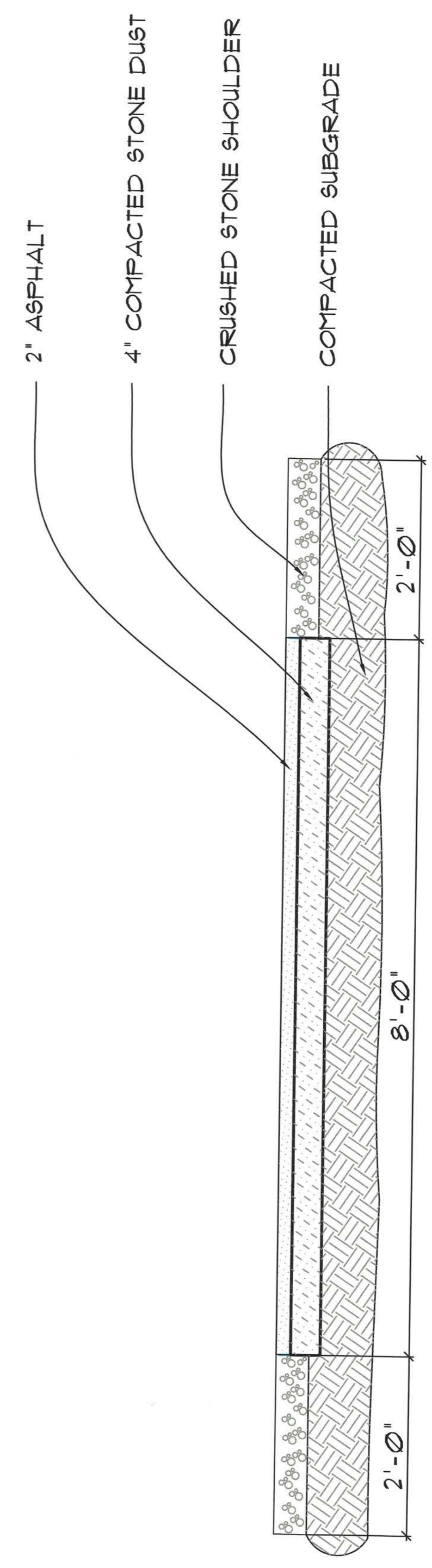
ELIZABETH HUPP RICHARD PROPERTY





TRAIL JUNCTION:

Scale: 1" = 50'



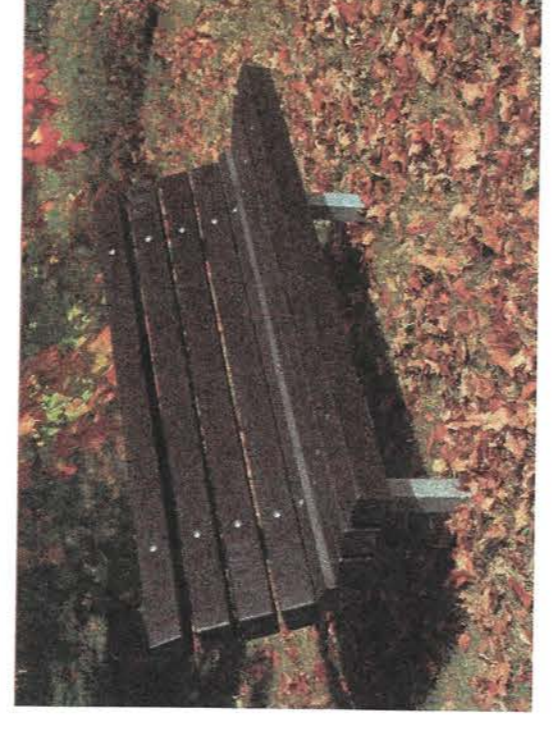
**A** PRIMARY TRAIL (TYPICAL):

N.T.S.

Section:

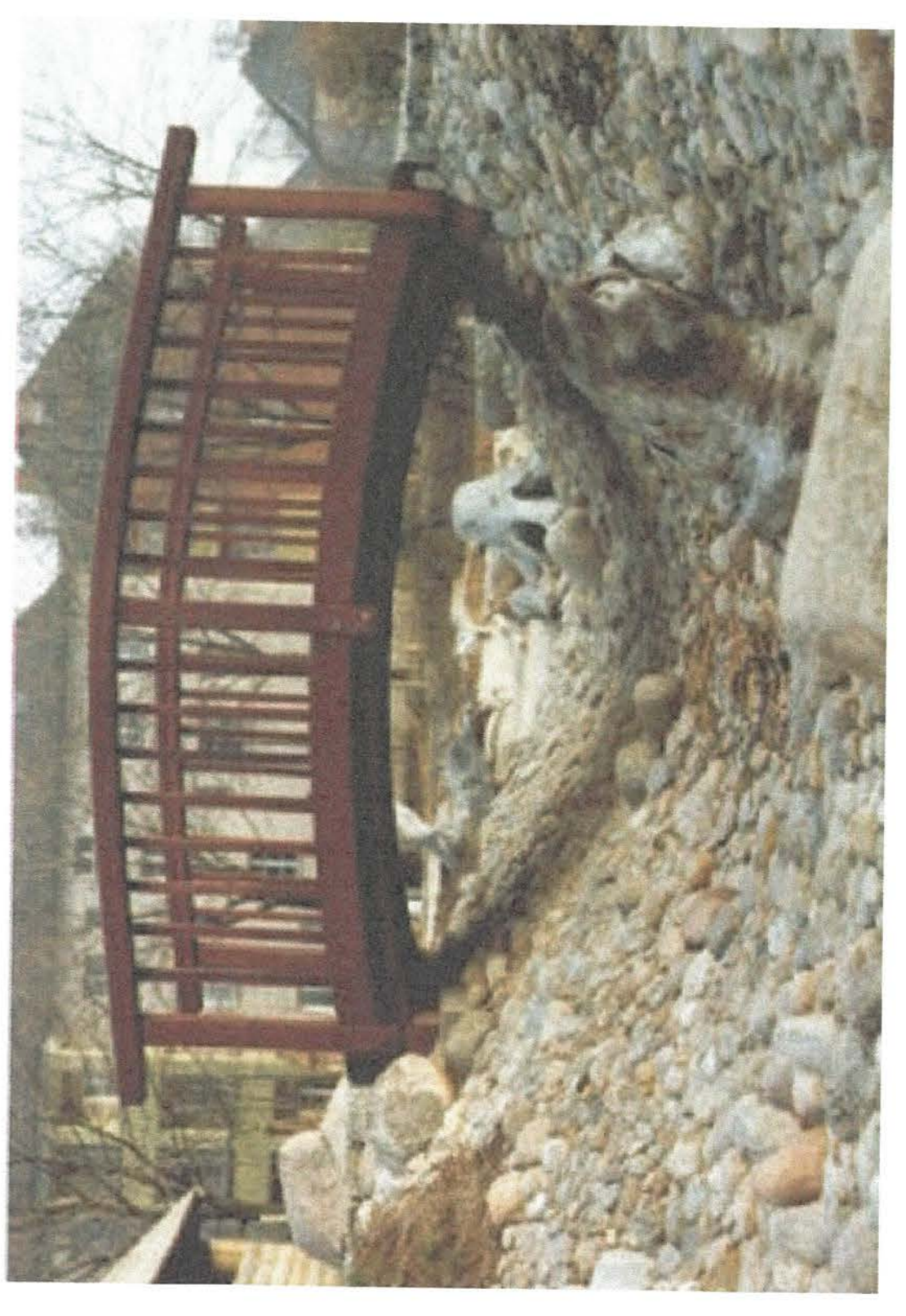
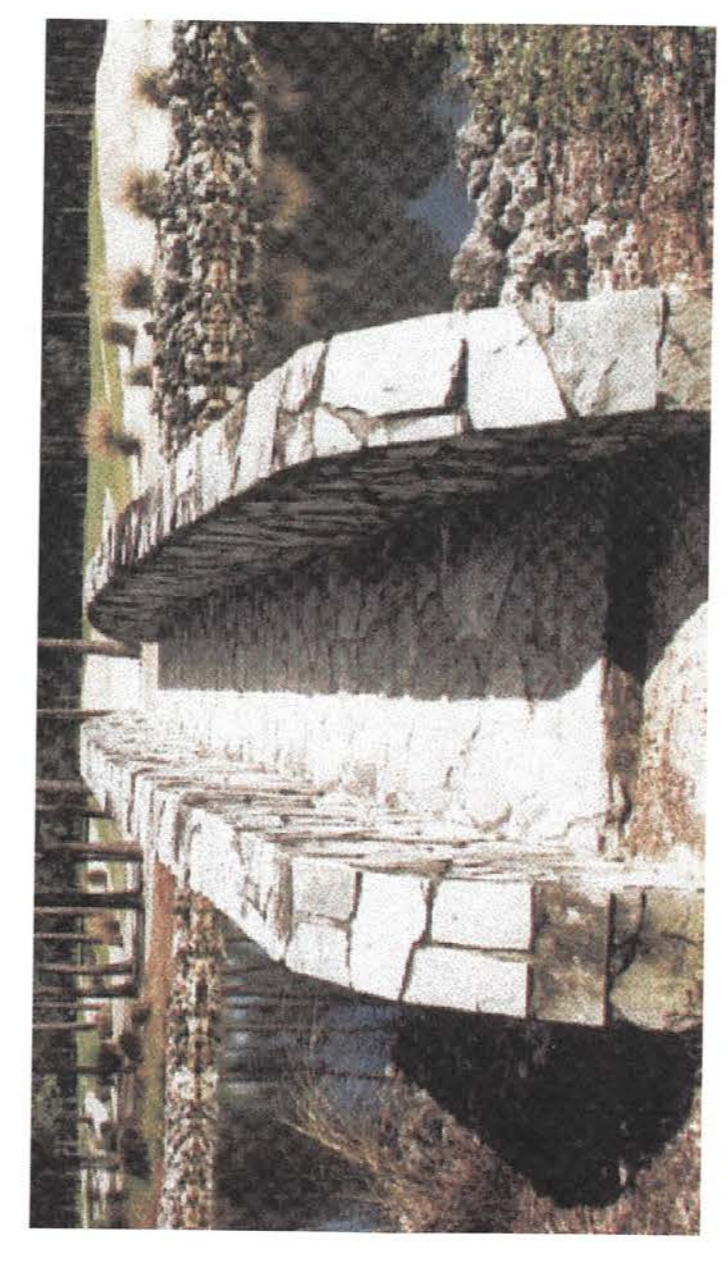


**PRIMARY TRAIL**  
THE PRIMARY TRAIL WILL CONSIST OF AN 8'-0" ASPHALT SURFACE THAT WILL SERVE AS A MULTI-USE CONNECTOR BETWEEN THE HIGH SCHOOL AND THE TOWN PARK. THE UNWINDING PATH WILL OFFER RESTING AREAS ALONG THE WAY.



**B**

**REST STOPS**  
BENCHES WILL BE SITED ALONG THE TRAIL TO PROVIDE VISITORS OPPORTUNITIES TO REST AND ENJOY THE VIEW.



**C**

**CREEK CROSSINGS**  
A VARIETY OF OPTIONS EXIST FOR CREEK CROSSINGS. PICTURED ABOVE LEFT IS A BRIDGE CONSTRUCTED OF WEATHERING STEEL FOR A NATURAL LOOK. AT TOP RIGHT IS A STONE BRIDGE CONSTRUCTED ON A STEEL FRAME. EXTREMELY RIGHT IS A WOODEN BRIDGE MADE OF EXTREMELY CRAFTED AND BEAUTIFUL EKSI, A NORTH AFRICAN HARDWOOD.

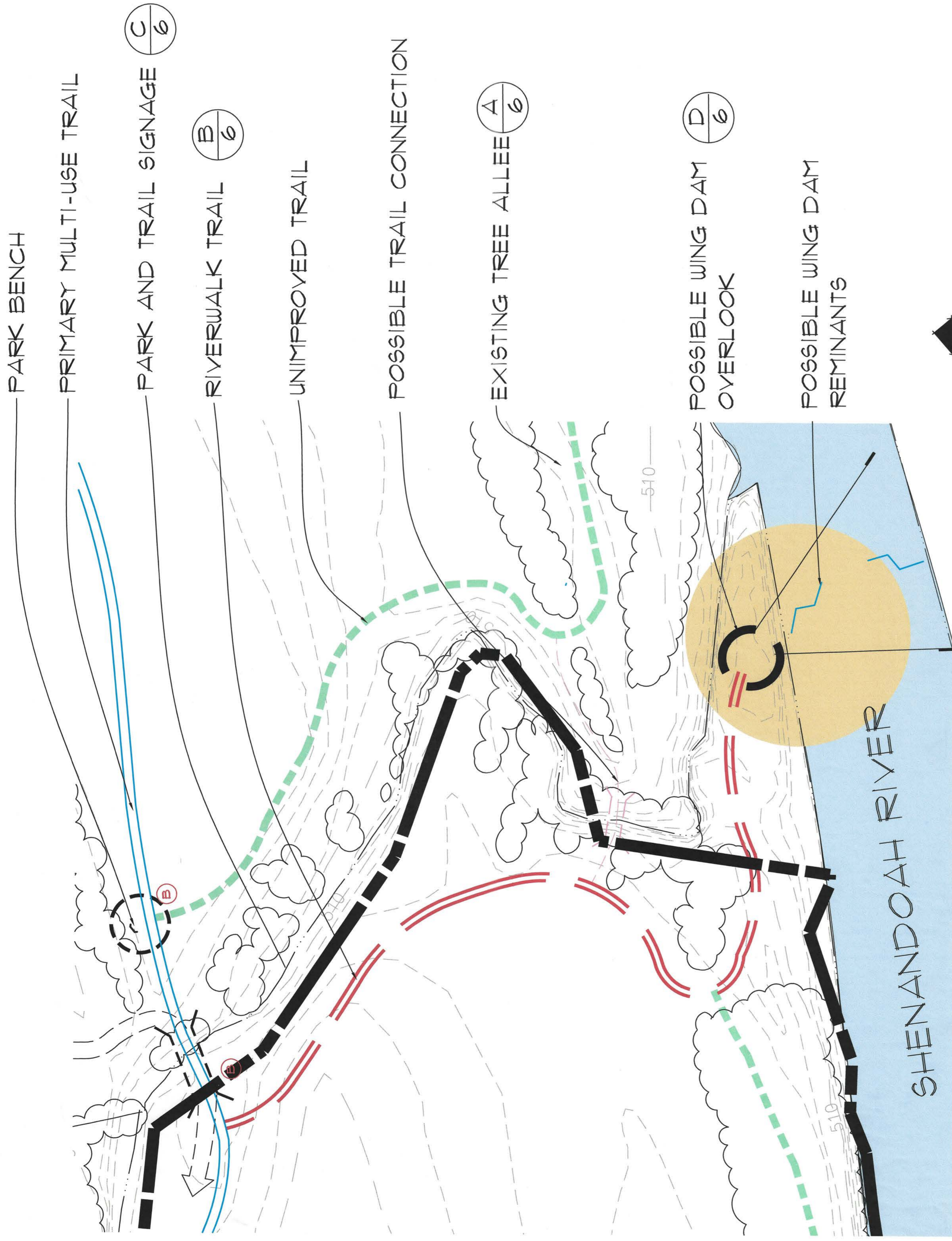
PRIMARY TRAIL IMAGES:

Date: September 23, 2002  
UHGA # 1927-0101  
PAGE 5 OF 6

**GA**  
ENGINEERS • LAND PLANNERS • LANDSCAPE ARCHITECTS  
Gordon Associates, Inc.  
4501 201st St., P.O. Box 200  
(760) 263-1800 • (760) 263-5008 • FAX (760) 263-0788

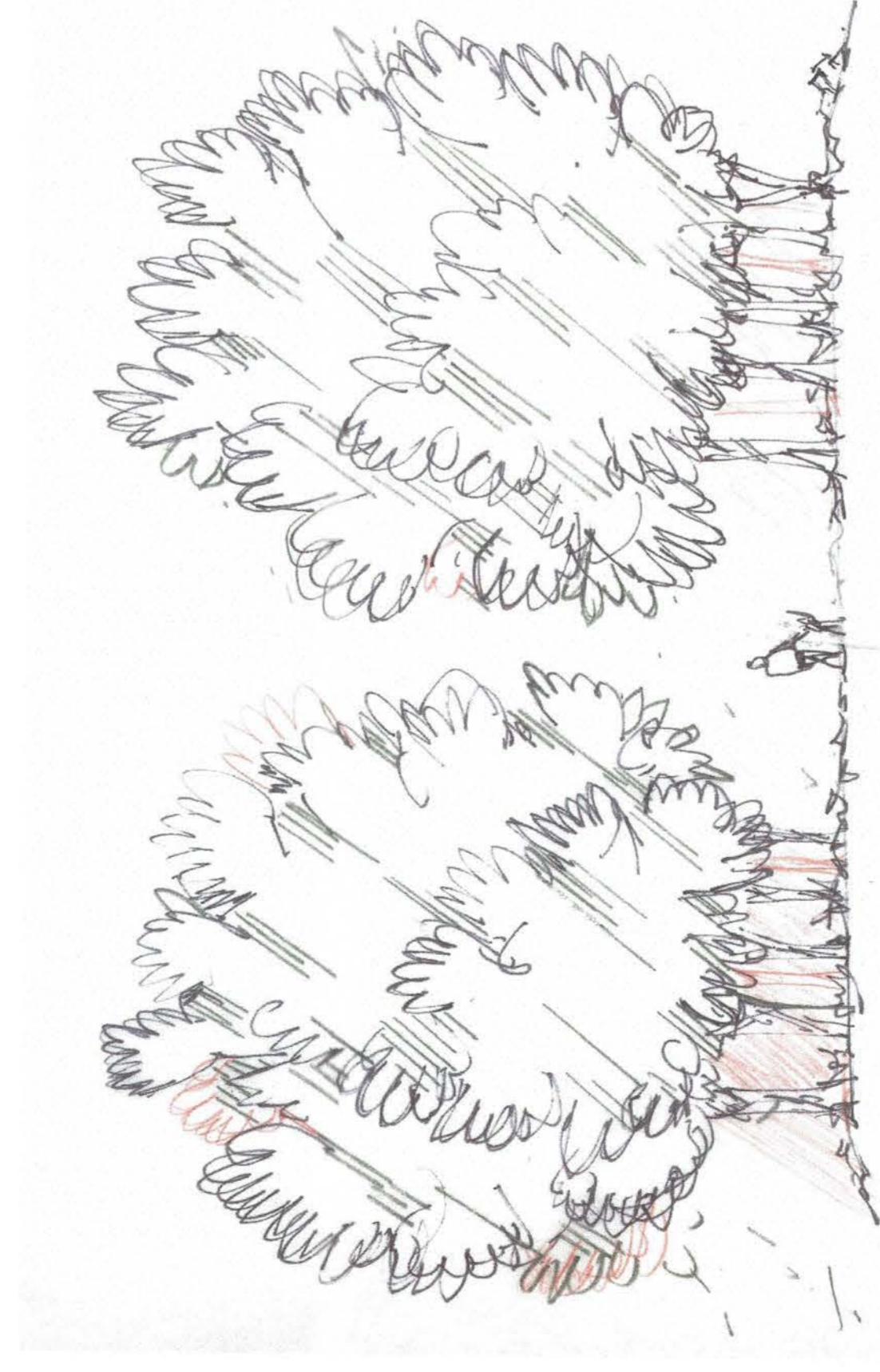
PRIMARY TRAIL PLAN AND DETAILS  
**TOWN OF STRASBURG**  
RECREATION MASTER PLAN  
ELIZABETH HUPP RICHARD PROPERTY





RIVERWALK TRAIL/HISTORIC OVERLOOK AREA:

Scale: 1" = 50'



A

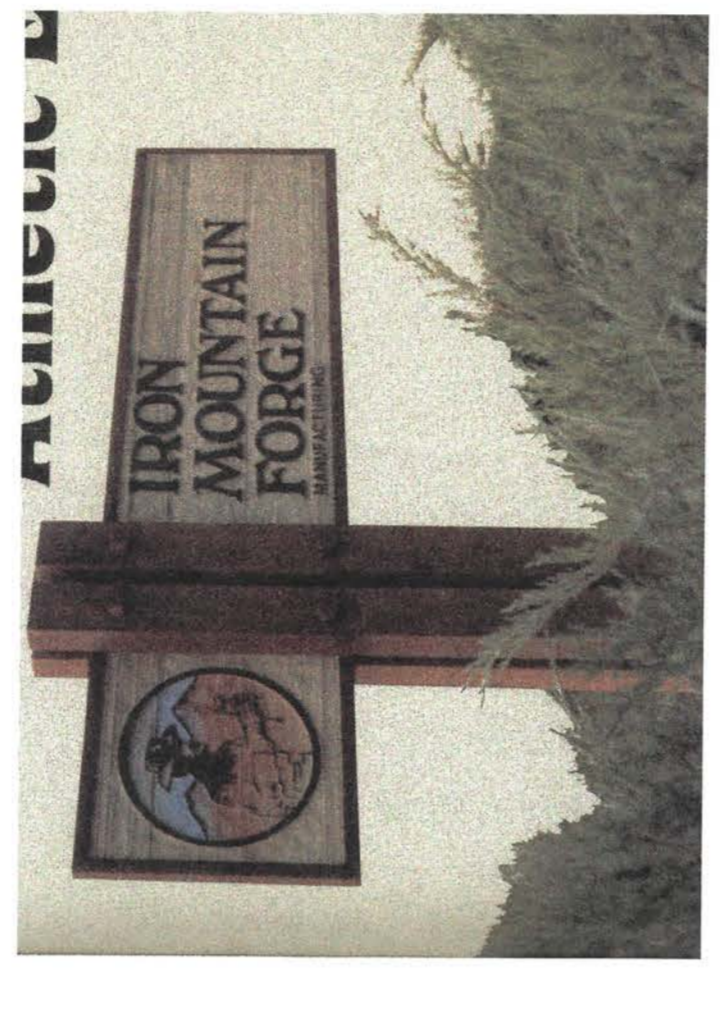
EXISTING TREE ALLEE  
RESIDENTS CAN STROLL ALONG AN UNIMPROVED TRAIL THAT WILL MEANDER THROUGH AN EXISTING ALLEE OF TREES NEAR THE BANKS OF THE SHENANDOAH RIVER



B

RIVERWALK TRAIL

THE RIVERWALK TRAIL WILL CONSIST OF A 6' ASPHALT PATH THAT WILL LOOP DOWN TO RIVER'S EDGE. THESE TRAILS WILL LEAD TO AREAS OF INTEREST SUCH AS SCENIC RIVER OVERLOOKS, AND THE HISTORIC WING DAM. ADVENTURERS MAY EXPLORE THE RIVER'S EDGE ALONG THE UNIMPROVED TRAILS CONNECTING TO THE RIVERWALK TRAILS. THE UNIMPROVED TRAILS WILL CONSIST OF TRODDED EARTHEN OR WOOD CHIPS AND WILL MEANDER THROUGH THE WOODS AND ACROSS THE PARK'S OPEN MEADOWS.



C

SIGNAGE

SIGNAGE WILL BE SITED ALONG THE TRAILS TO ORIENT VISITORS AND DIRECT THEM TO AREAS OF INTEREST IN THE PARK.

- A PARK SIGNAGE WILL MARK THE ENTRANCES TO THE PARK AND PROVIDE A MAP OF THE RECREATIONAL AVENUE.
- B DIRECTIONAL SIGNAGE WILL BE PLACED AT KEY INTERSECTIONS ALONG THE TRAILS TO GUIDE RESIDENTS THROUGH THE PARK.
- C INTERPRETATIVE SIGNAGE WILL BE PLACED AT LANDMARKS AND PLACES OF INTEREST IN THE PARK.



D

WING DAM

THE REMAINS OF AN 1800s-ERA WING DAM ARE BELIEVED TO BE ON THE RIVER. IF CONFIRMED AN OVERLOOK WILL PROVIDE VISITORS AN OPPORTUNITY TO VIEW THE AREA. INTERPRETATIVE SIGNS WILL BE USED TO RECORD THE HISTORIC SIGNIFICANCE OF THE SITE.

1. SOURCE: THE SHENANDOAH RIVER ATLAS, PUBLISHED BY THE FRIENDS OF THE SHENANDOAH RIVER, COPYRIGHT 1997



TRAIL IMAGES:

