



0 1,000 2,000  
Feet  
Scale - 1: 24,000



## Town of Strasburg Zoning Map

- Town of Strasburg Corporate Limits
- Parcel Boundary

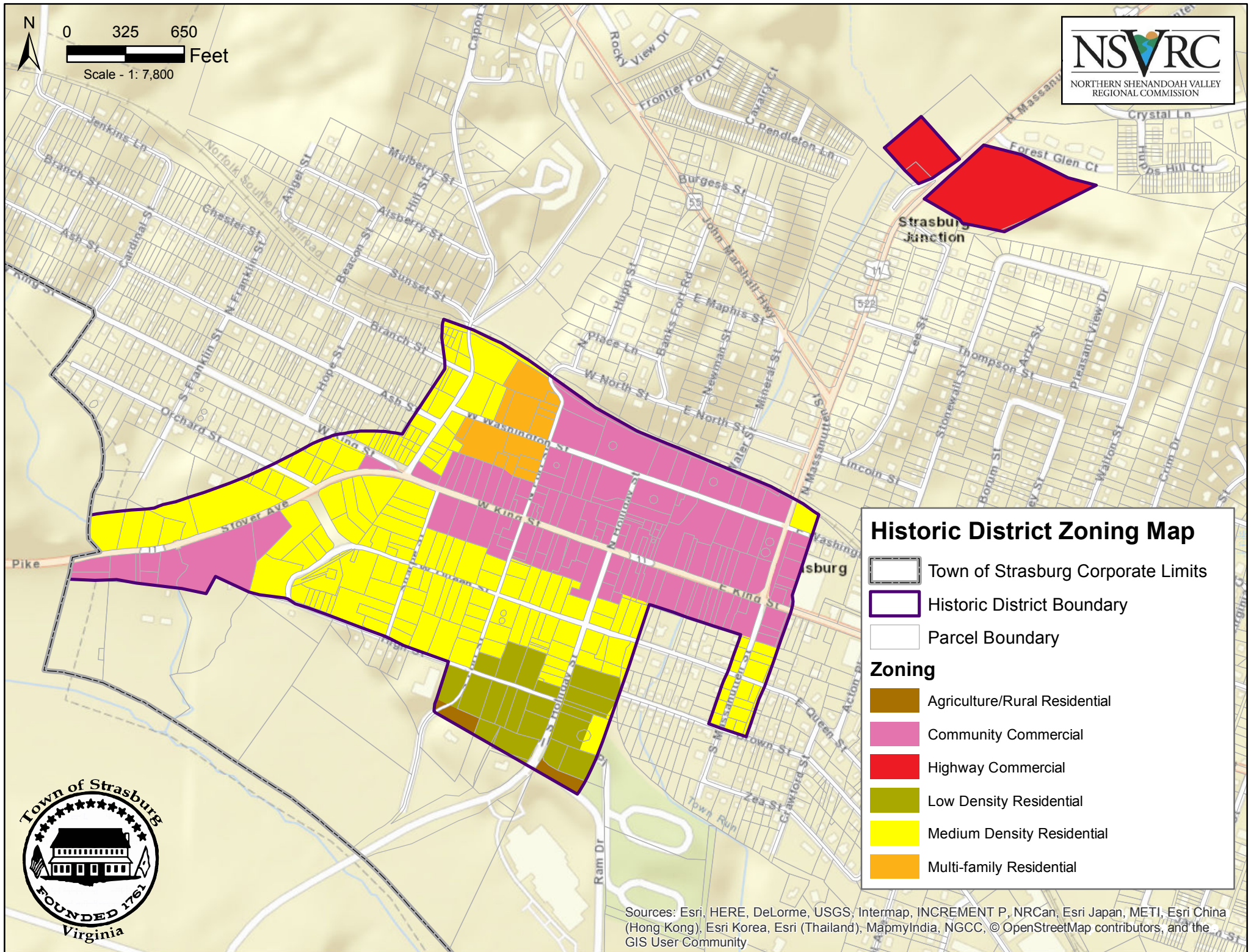
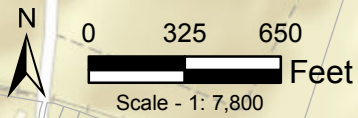
### Zoning

- Agriculture/Rural Residential
- Community Commercial
- Highway Commercial
- Business Park/Limited Industrial
- Planned Development
- Low Density Residential
- Medium Density Residential
- Multi-family Residential

Sources: Esri, HERE, DeLorme, USGS, Intermap, INCREMENT P, NRCan, Esri Japan, METI, Esri China (Hong Kong), Esri Korea, Esri (Thailand), MapmyIndia, NGCC, © OpenStreetMap contributors, and the GIS User Community







### Historic District Zoning Map

- Town of Strasburg Corporate Limits
- Historic District Boundary
- Parcel Boundary

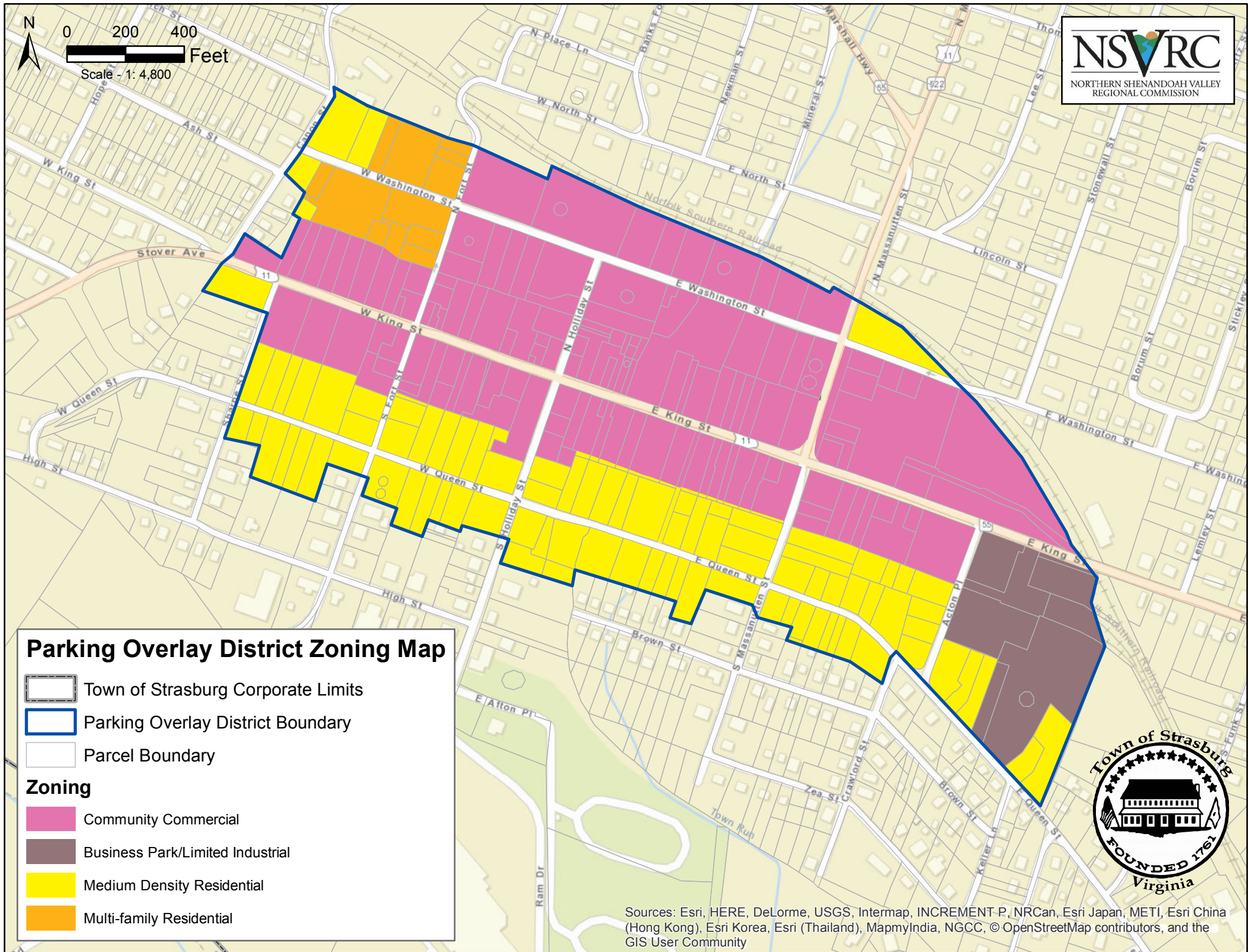
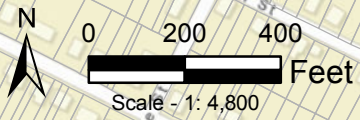
#### Zoning

- Agriculture/Rural Residential
- Community Commercial
- Highway Commercial
- Low Density Residential
- Medium Density Residential
- Multi-family Residential



Sources: Esri, HERE, DeLorme, USGS, Intermap, INCREMENT P, NRCan, Esri Japan, METI, Esri China (Hong Kong), Esri Korea, Esri (Thailand), MapmyIndia, NGCC, © OpenStreetMap contributors, and the GIS User Community





### Parking Overlay District Zoning Map

- Town of Strasburg Corporate Limits
- Parking Overlay District Boundary
- Parcel Boundary

#### Zoning

- Community Commercial
- Business Park/Limited Industrial
- Medium Density Residential
- Multi-family Residential

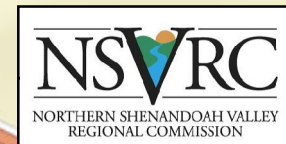


Sources: Esri, HERE, DeLorme, USGS, Intermap, INCREMENT P, NRCan, Esri Japan, METI, Esri China (Hong Kong), Esri Korea, Esri (Thailand), MapmyIndia, NGCC, © OpenStreetMap contributors, and the GIS User Community















0 600 1,200  
Feet  
Scale - 1: 14,400



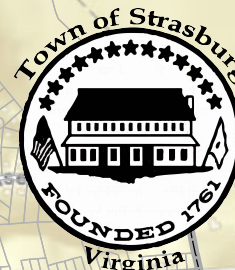
## Entrance Corridor Zoning Map

-  Town of Strasburg Corporate Limits
-  Entrance Corridor
-  Parcel Boundary

### Zoning

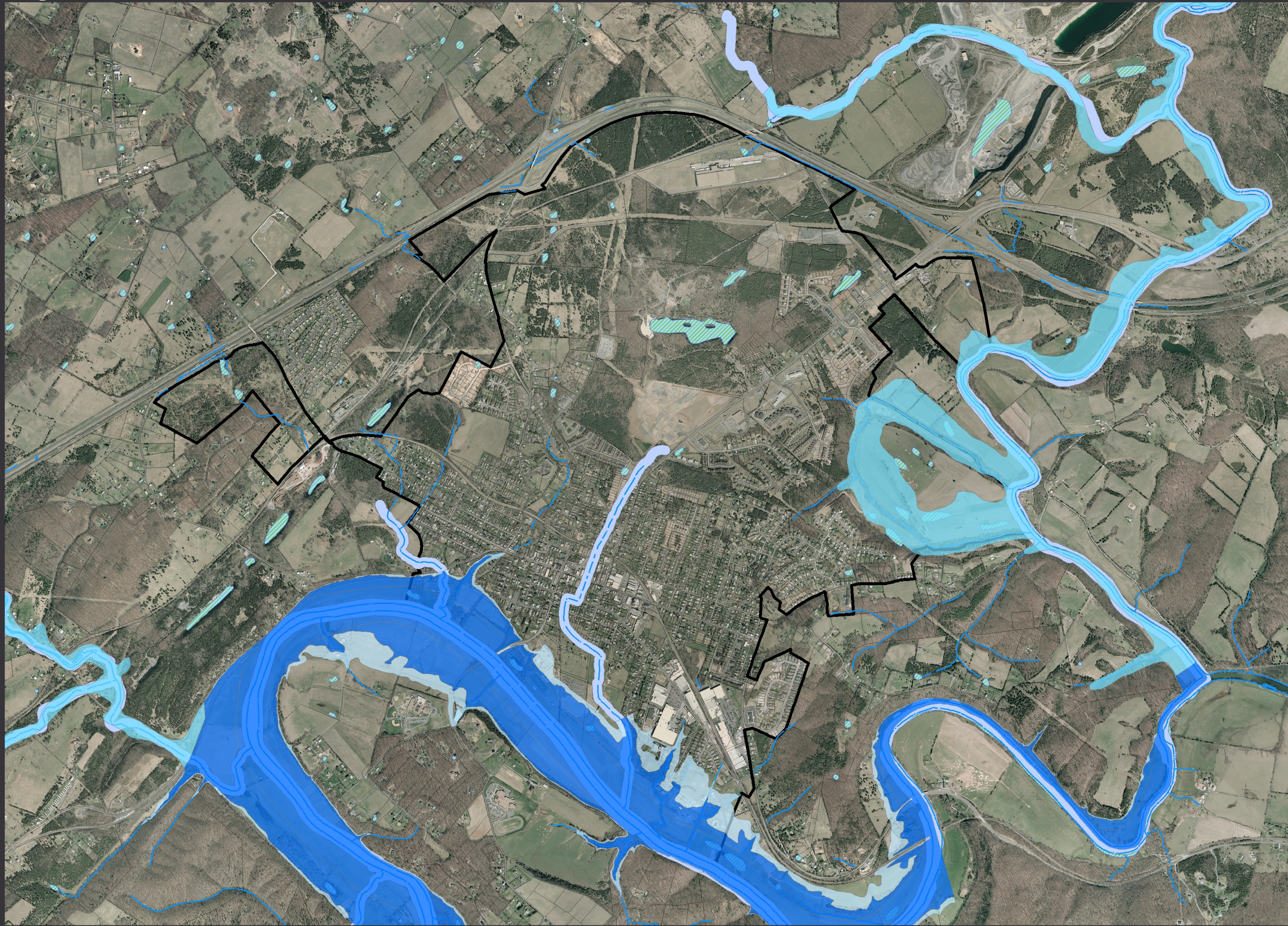
-  Agriculture/Rural Residential
-  Community Commercial
-  Highway Commercial
-  Planned Development
-  Low Density Residential
-  Medium Density Residential
-  Multi-family Residential

Sources: Esri, HERE, DeLorme, USGS, Intermap, INCREMENT P, NRCan, Esri Japan, METI, Esri China (Hong Kong), Esri Korea, Esri (Thailand), MapmyIndia, NGCC, © OpenStreetMap contributors, and the GIS User Community





- Legend
- FLOODPLAIN
- ANNUAL FLOOD HAZARD
- 0.2 PCT
  - 1 PCT NO BFE
  - 1 PCT W/ BFE
  - Streams
  - WETLANDS
  - Town Boundary



Map created by:  
Town of Strasburg  
Department of Economic Development  
and Planning  
174 East King Street  
P.O. Box 351  
Strasburg, VA 22657  
540.465.9197

Updated: July 30, 2014

Data Sources:  
>Town of Strasburg  
Field Surveys  
>Shenandoah County  
GIS Department

